

Attack the electrical vulnerability of NSCLC cells¹

Optune Lua[®] is an innovative approach for treating mNSCLC after progression on or after platinum-based therapy¹

Indication For Use

Optune Lua[®] is intended as a treatment concurrent with PD-1/PD-L1 inhibitors or docetaxel for adult patients with metastatic non-small cell lung cancer who have progressed on or after a platinum-based regimen.

Selected Safety Information

Contraindications

Do not use Optune Lua in patients with an electrical implant. Use of Optune Lua together with electrical implants has not been tested and may lead to malfunctioning of the implanted device.

mNSCLC, metastatic non-small cell lung cancer; NSCLC, non-small cell lung cancer.

Please see full Important Safety Information on pages 6 to 7 and complete Instructions For Use (IFU) at OptuneLuaHCP.com.

novocure[®]

OPTUNE
LUA[®]

US-OPL-00222v1.0 October 2024

What is Optune Lua?

Optune Lua is a noninvasive, wearable device that **continuously delivers** electric fields—known as **tumor treating fields (TTFields)**—to fight cancer.^{1,*}

As a portable device, Optune Lua is designed to fit into patients' every day lives and allow them to continue their daily routine.



What are TTFields?

TTFields are alternating electric fields that exert physical forces on electrically charged components in dividing cancer cells, resulting in cell death. TTFields are delivered by pairs of transducer arrays that adhere directly to the skin.¹

*Effect is enabled when device is powered; transducer arrays should be changed at least 2 times per week (every 4 days at most).¹

FDA, US Food and Drug Administration; mNSCLC, metastatic non-small cell lung cancer.

Please see full Important Safety Information on pages 6 to 7 and complete Instructions For Use (IFU) at OptuneLuaHCP.com.

How does Optune Lua target cancer cells and not healthy ones?

Because healthy cells have different properties than cancer cells (including division rate, morphology, and electrical properties), they are spared by Optune Lua.¹⁻³

Optune Lua delivers TTFields that are precisely tuned to 150 kHz—the optimal frequency is specific to the cancer cell type.¹

Optune Lua is the first treatment to use electric fields for the treatment of mNSCLC, although electric fields have been utilized as treatment for other diseases^{1,2,4,5}:

- **Low frequency:** pacemakers, TENS (transcutaneous electrical nerve stimulation), deep brain stimulation
- **High frequency:** microwave ablation, x-rays

Optune Lua is the first FDA-approved treatment that uses TTFields to disarm tumor cells by tapping into their electrical properties¹

Selected Safety Information

Contraindications (cont'd)

Do not use Optune Lua in patients known to be sensitive to conductive hydrogels. In this case, skin contact with the gel used with Optune Lua may commonly cause increased redness and itching, and rarely may even lead to severe allergic reactions, such as fall in blood pressure and breathing difficulty.

Disrupting mitosis

As cancer cells divide rapidly, they are vulnerable to the antimitotic effect of TTFields. Preclinical evidence has shown that by exerting physical forces on electrically charged components of cancer cells, TTFields can disrupt mitotic processes, such as assembly of the mitotic spindle, leading to abnormal cell division and downstream immunogenic cell death.^{1,6,7}

Activating downstream immune response

According to preclinical data, immunogenic cell death leads to expansion of T cells that target cancer cells, increased T-cell infiltration at the tumor site, and increased cancer cell surveillance throughout the body.^{1,8}

TTFields, Tumor Treating Fields.

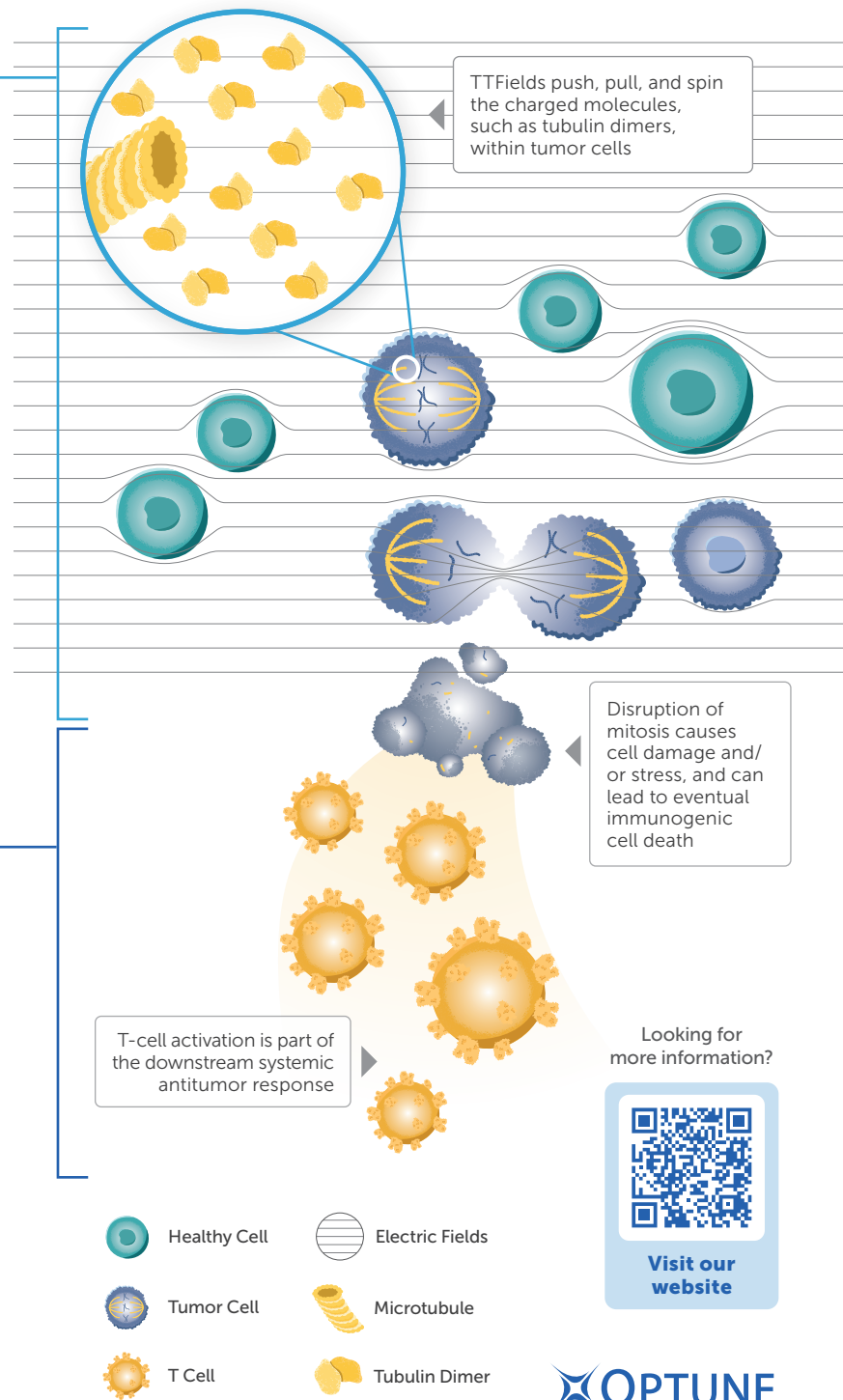
Selected Safety Information

Warnings and Precautions

Optune Lua can only be prescribed by a healthcare provider that has completed the required certification training provided by Novocure® (the device manufacturer).

Do not prescribe Optune Lua for patients who are pregnant, whom you think might be pregnant, or who are trying to get pregnant, as the safety and effectiveness of Optune Lua in these populations have not been established.

Please see full Important Safety Information on pages 6 to 7 and complete Instructions For Use (IFU) at OptuneLuaHCP.com.



Indication For Use

Optune Lua® is intended as a treatment concurrent with PD-1/PD-L1 inhibitors or docetaxel for adult patients with metastatic non-small cell lung cancer who have progressed on or after a platinum-based regimen.

Important Safety Information

Contraindications

Do not use Optune Lua in patients with an electrical implant. Use of Optune Lua together with electrical implants has not been tested and may lead to malfunctioning of the implanted device.

Do not use Optune Lua in patients known to be sensitive to conductive hydrogels. In this case, skin contact with the gel used with Optune Lua may commonly cause increased redness and itching, and rarely may even lead to severe allergic reactions, such as a fall in blood pressure and breathing difficulty.

Warnings and Precautions

Optune Lua can only be prescribed by a healthcare provider that has completed the required certification training provided by Novocure® (the device manufacturer).

Do not prescribe Optune Lua for patients that who are pregnant, whom you think might be pregnant, or who are trying to get pregnant, as the safety and effectiveness of Optune Lua in these populations have not been established.

The most common ($\geq 10\%$) adverse events involving Optune Lua concurrent with PD-1/PD-L1 inhibitors or docetaxel were dermatitis, musculoskeletal pain, fatigue, anemia, dyspnea, nausea, cough, diarrhea, anorexia, pruritus, leukopenia, pneumonia, respiratory tract infection, localized edema, rash, pain, constipation, skin ulcers, and hypokalemia.

Other potential adverse effects associated with the use of Optune Lua include treatment related skin toxicity, allergic reaction to the adhesive or to the gel, overheating of the array leading to pain and/or local skin burns, infections at the site where the arrays make contact with the skin, local warmth and tingling sensation beneath the arrays, medical device site reaction, muscle twitching, and skin breakdown or skin ulcer.

If the patient has an underlying serious skin condition on the chest, evaluate whether this may prevent or temporarily interfere with Optune Lua treatment.

Please see the Optune Lua Instructions For Use (IFU) for complete information regarding the device's indications, contraindications, warnings, and precautions at [OptuneLuaHCP.com](https://www.OptuneLuaHCP.com).

References: **1.** Optune Lua for Non-Small Cell Lung Cancer (NSCLC). Physician Instructions for Use. Novocure; 2024. **2.** Karanam NK, Story MD. *Int J Radiat Biol.* 2021;97(8):1044-1054. doi:10.1080/09553002.2020.1837984. **3.** Ahmad MA, Al Natour Z, Mustafa F, Rizvi TA. *IEEE Access.* 2018;6:25979-25986. doi:10.1109/ACCESS.2018.2830883. **4.** Krauss J, Lipsman N, Aziz T, et al. *Nat Rev Neurol.* 2021;17(2):75-87. doi:10.1038/s41582-020-00426-z. **5.** Mulpuru S, Madhavan M, McLeod C, Cha Y-M, Friedman PA. *J Am Coll Cardiol.* 2017;69(2):189-210. doi:10.1016/j.jacc.2016.10.061. **6.** Gera N, Yang A, Holtzman TS, Lee SX, Wong ET, Swanson KD. *PLoS One.* 2015;10(5):e0125269. doi:10.1371/journal.pone.0125269. **7.** Giladi M, Schneiderman RS, Voloshin T, et al. *Sci Rep.* 2015;5:18046. doi:10.1038/srep18046. **8.** Voloshin T, Kaynan N, Davidi S, et al. *Cancer Immunol Immunother.* 2020;69(7):1191-1204. doi:10.1007/s00262-020-02534-7.

Bring the innovation of Optune Lua[®] to your patients with mNSCLC who have progressed on or after a platinum-based regimen

Optune Lua was studied concurrent with PD-1/PD-L1 inhibitors or docetaxel in the LUNAR trial.¹



SEE THE DATA



mNSCLC, metastatic non-small cell lung cancer; PD-1/PD-L1, programmed cell death 1 protein/programmed cell death 1 ligand 1.

Indication For Use

Optune Lua[®] is intended as a treatment concurrent with PD-1/PD-L1 inhibitors or docetaxel for adult patients with metastatic non-small cell lung cancer who have progressed on or after a platinum-based regimen.

Selected Safety Information

Contraindications

Do not use Optune Lua in patients with an electrical implant. Use of Optune Lua together with electrical implants has not been tested and may lead to malfunctioning of the implanted device.

Please see the full Important Safety Information on pages 6-7 and the Optune Lua Instructions For Use (IFU) for complete information regarding the device's indications, contraindications, warnings, and precautions at [OptuneLuaHCP.com](https://www.OptuneLuaHCP.com).

novocure[®]

OPTUNE
LUA[®]