

CARING FOR YOUR SKIN WITH OPTUNE LUA®

Learn how to apply arrays, manage skin irritation, and more

*whose cancer is unresectable, locally advanced or metastatic, to be used together with standard chemotherapy (pemetrexed and platinum-based chemotherapy)

 **OPTUNE**
LUA®

I POWER MY LIFE

Indication and Selected Important Safety Information

What is Optune Lua approved to treat?

Optune Lua is a wearable, portable, FDA-approved device indicated for the treatment of adult patients, with unresectable, locally advanced or metastatic, malignant pleural mesothelioma (MPM) to be used together with standard chemotherapy (pemetrexed and platinum-based chemotherapy).

Who should not use Optune Lua?

Optune Lua is not for everyone. Talk to your doctor if you have:

- **An implanted electronic medical device including a pacemaker, implantable automatic defibrillator, etc.** Optune Lua has not been tested in people with implanted electronic devices, which may cause the devices not to work properly

Please see full Important Safety Information on [page 8](#) and the Optune Lua Patient Information and Operation Manual (PIOM) at OptuneLua.com/MPM/home.

Actor Portrayal



Taking care of your skin

Mild or moderate skin irritation is the most common side effect of Optune Lua. This brochure can help you stay on top of it, so you know what to do if it happens.

Keep in mind:

Most people were able to treat their skin irritation with a prescription medication applied to the skin provided by their doctor and by adjusting the placement of their arrays.

What's inside?

Here you'll find helpful information about how to care for your skin while using Optune Lua, such as:

How to recognize skin irritation	Page 3
How to apply and change the arrays	Page 4
Minimizing the risk of skin irritation	Page 5
How to remove arrays from your body	Page 6
Tips and best practices	Page 7
Important Safety Information	Page 8

Selected Important Safety Information

Who should not use Optune Lua? (continued)

- **A known sensitivity to conductive hydrogels** (the gel on the arrays placed on the upper body like the ones used on EKGs). When Optune Lua comes into contact with the skin, it may cause more redness and itching or may rarely cause a life-threatening allergic reaction

Do not use Optune Lua if you are pregnant or are planning to become pregnant. It is not known if Optune Lua is safe or effective during pregnancy.

Please see full Important Safety Information on [page 8](#) and the Optune Lua Patient Information and Operation Manual (PIOM) at OptuneLua.com/MPM/home.



How to recognize skin irritation

When using Optune Lua®, it's important to look out for signs of skin irritation. These may look like a red rash, small sores, or blisters on your chest or back. Identifying it early can help you avoid any interruptions in your treatment. If you do experience any irritation, avoid placing the arrays in that area so you don't cause any further irritation.



Take a picture of your skin irritation

This is the best way to quickly share your symptoms with your doctor, but this shouldn't replace an in-person doctor visit. Whether it's swelling, redness, or another skin-related symptom, they may be able to prescribe creams or solutions to help manage your symptoms.

The arrays may leave temporary red indents on your skin. If they don't go away, contact your doctor.

Common types of skin irritation

Irritated skin can show up in many ways. See below for images of common skin conditions you should keep an eye out for and talk to your doctor if you experience any of them.



Itching

This often includes dry and flaky skin.



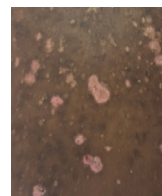
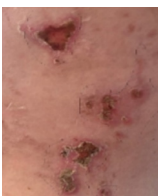
Excessive sweating

You may notice this regardless of heat conditions or physical activity.



Rashes

You might notice some redness, become itchy, or feel scaly skin.



Ulcers

These may start as subtle, shallow lesions and can be hard to identify.



Infections

These can result in pus, itching, or burning.

Images shown are for illustrative purposes. The severity and look of skin irritation may vary from person to person. If irritated skin is bothering you, don't wait for it to get worse. Talk to your doctor early and often about any signs of skin irritation.

Selected Important Safety Information

What should I know before using Optune Lua?

Optune Lua should only be used after receiving training from qualified personnel, such as your doctor, a nurse, or other medical staff who have completed a training course given by Novocure®, the maker of Optune Lua.

- Do not use any parts that did not come with Optune Lua sent to you by Novocure or given to you by your doctor

Please see full Important Safety Information on [page 8](#) and the Optune Lua Patient Information and Operation Manual (PIOM) at OptuneLua.com/MPM/home.



How to apply and change the arrays

Make sure your care partner is available to help you, since it may be hard to place the arrays on your own. Follow the steps below:

1



Wash your skin with warm water, a washcloth, and gentle soap. You can take a full shower if you prefer. Gently pat your skin dry with an absorbent towel to remove moisture or residue.

2



Remove existing hair using an electric shaver or trimmer, if applicable (as needed or at least every 7-10 days).

3



Let your skin breathe for up to a few hours (optional).

4



Clean skin again. Apply any prescribed medications (if applicable) and let absorb for at least 15-20 minutes. Clean away any residue by gently cleaning the skin with water using a gauze pad or cloth. Avoid rubbing to minimize skin abrasion or damage.

5



Make sure you have 4 total arrays, 2 with black connectors and 2 with white connectors. Remove the array liner from the first array. You may use the Array Applicator to help. Reach out to your Device Support Specialist if you have any questions.

6



Place the arrays, one at a time. Make sure to press the edges firmly onto your skin. Ask your Novocure® Support Specialist for the correct way to shift your arrays. When you replace the arrays again, shift them back to their original location. Repeat this process each time you replace your arrays. Refer to your array layout map for placement instructions and see [page 7](#) for tips and best practices.

7



Plug the array connectors into the connection box. Make sure the arrows on the connectors face the silver post. Line up the black and white arrays according to the color on the box. Then, plug the connection cable into the Optune Lua® device and start treatment.

8



Wear your clothes as normal over the arrays. It is recommended to wear the arrays for at least 18 hours per day on average for the best response to treatment.

Selected Important Safety Information

What should I know before using Optune Lua? (continued)

- Do not get the device or transducer arrays wet
- Please be aware that Optune Lua has a cord that may cause tripping when connected to an electric socket

Please see full Important Safety Information on [page 8](#) and the Optune Lua Patient Information and Operation Manual (PIOM) at OptuneLua.com/MPM/home.





How to help minimize the risk of skin irritation

Keeping your skin healthy may be the best way to help prevent skin irritation



Keep skin clean and dry



Use only water when routinely cleaning your skin



Remove existing hair using an electric shaver or trimmer



Moisturize regularly to keep your skin hydrated

As you change your arrays, keep these tips in mind:

- To help reduce your risk of skin damage or irritation, use care when changing arrays. Be sure not to pull or forcefully rub your skin
- Make sure you're changing the arrays at least twice per week (every 4 days at most)
- **Examine your skin at each array change to check for changes or signs of irritation. If you see something, report it to your doctor as soon as possible**

Selected Important Safety Information

What should I know before using Optune Lua®? (continued)

- If you have an underlying serious skin condition on the upper body, discuss with your doctor whether this may prevent or temporarily interfere with the Optune Lua treatment

Please see full Important Safety Information on [page 8](#) and the Optune Lua Patient Information and Operation Manual (PIOM) at OptuneLua.com/MPM/home.



How do I remove the arrays from my body?

Be sure to remove the arrays slowly and carefully to avoid irritating your skin.
Follow the steps below:

1



Unplug the array cables from the connector box. If you prefer, step into a warm shower to loosen and remove the arrays. Leave the Optune Lua® device outside the room while you wash.

2



Remove all 4 arrays by gently peeling the medical tape away from your skin and slowly pulling back on the edge of the array. **Take your time while removing the arrays, as this can help prevent skin damage.**

3



You can help loosen the edge of your arrays to make them easier to remove by using a medical adhesive remover, a water-based makeup remover, baby oil, or warm water.

4



Carefully check your skin for any signs of irritation or infection. Ask your care partner to check areas that may be hard to see, such as your back or sides. Any signs of skin irritation should be reported to your doctor as soon as possible.

Being proactive about skin irritation

Contact your doctor if you experience swelling, redness, excessive itching, or other skin-related symptoms. Your doctor may prescribe prescription medication applied to the skin to treat skin irritation.

You can help reduce your risk of developing skin irritation by changing your arrays at least 2 times per week (every 4 days at most).

Selected Important Safety Information

What are the possible side effects of Optune Lua?

Most common side effects of Optune Lua when used together with chemotherapy were low red blood cell count, constipation, nausea, tiredness, chest pain, fatigue, skin irritation from device use, itchy skin, and cough.

Other potential adverse effects associated with the use of Optune Lua include: treatment related skin irritation, allergic reaction to the plaster or to the gel, electrode overheating leading to pain and/or local skin burns, infections at sites of electrode contact with the skin,...

Please see full Important Safety Information on [page 8](#) and the Optune Lua Patient Information and Operation Manual (PIOM) at OptuneLua.com/MPM/home.





Tips and best practices

- 1** When placing the arrays, place the front ones first, and remember to avoid placing discs over the nipple, collarbone, and ports. (If a port will be used to administer medicine before the next array change, no part of the array should cover the port.)
- 2** The skin surrounding the nipple is delicate, and it is important not to place the disc over it. To help protect the skin, place gauze over the nipple to prevent contact with the adhesive and wires. Remember to avoid placing gauze under the ceramic disc.
- 3** When placing the back arrays, consider the “body contour.” Avoid placing the edge of the arrays in a skin fold or crease, as it can cause skin issues.
- 4** For those wearing a bra, be sure to use one without wires, as they can interfere with Tumor Treating Fields (TTFields). The wiring in a bra may also set off a temperature alarm on the device.
- 5** You should shift the arrays each time you change them to change up the contact site and reduce the risk of skin irritation.

Questions about how to shift arrays?

Be sure to reach out to a Device Support Specialist or your doctor.

Selected Important Safety Information

What are the possible side effects of Optune Lua®? (continued)

...local warmth and tingling sensation beneath the electrodes, muscle twitching, medical device site reaction and skin breakdown/skin ulcer.

Talk to your doctor if you have any of these side effects or questions.

Please see full Important Safety Information on [page 8](#) and the Optune Lua Patient Information and Operation Manual (PIOM) at OptuneLua.com/MPM/home.



Important Safety Information

What is Optune Lua® approved to treat?

Optune Lua is a wearable, portable, FDA-approved device indicated for the treatment of adult patients, with unresectable, locally advanced or metastatic, malignant pleural mesothelioma (MPM) to be used together with standard chemotherapy (pemetrexed and platinum-based chemotherapy).

Who should not use Optune Lua?

Optune Lua is not for everyone. Talk to your doctor if you have:

- **An implanted electronic medical device including a pacemaker, implantable automatic defibrillator, etc.** Optune Lua has not been tested in people with implanted electronic devices, which may cause the devices not to work properly
- **A known sensitivity to conductive hydrogels** (the gel on the arrays placed on the upper body like the ones used on EKGs). When Optune Lua comes into contact with the skin, it may cause more redness and itching or may rarely cause a life-threatening allergic reaction

Do not use Optune Lua if you are pregnant or are planning to become pregnant. It is not known if Optune Lua is safe or effective during pregnancy.

What should I know before using Optune Lua?

Optune Lua should only be used after receiving training from qualified personnel, such as your doctor, a nurse, or other medical staff who have completed a training course given by Novocure®, the maker of Optune Lua.

- Do not use any parts that did not come with Optune Lua sent to you by Novocure or given to you by your doctor
- Do not get the device or transducer arrays wet
- Please be aware that Optune Lua has a cord that may cause tripping when connected to an electric socket
- If you have an underlying serious skin condition on the upper body, discuss with your doctor whether this may prevent or temporarily interfere with the Optune Lua treatment

What are the possible side effects of Optune Lua?

Most common side effects of Optune Lua when used together with chemotherapy were low red blood cell count, constipation, nausea, tiredness, chest pain, fatigue, skin irritation from device use, itchy skin, and cough.

Other potential adverse effects associated with the use of Optune Lua include: treatment related skin irritation, allergic reaction to the plaster or to the gel, electrode overheating leading to pain and/or local skin burns, infections at sites of electrode contact with the skin, local warmth and tingling sensation beneath the electrodes, muscle twitching, medical device site reaction and skin breakdown/skin ulcer.

Talk to your doctor if you have any of these side effects or questions.

Please see [Patient Information and Operation Manual \(PIOM\)](#) for Optune Lua at OptuneLua.com/MPM/home.

MyNovocure®

Support created with you in mind

MyNovocure is a personalized patient support program that is here for you all day, every day to help you feel more confident throughout treatment.

MyNovocure can help with:



Insurance support



Resources for
traveling with
Optune Lua



Optune Lua® training
(as needed)



Troubleshooting
technical issues



Tips for integrating
Optune Lua into
your daily life



Reordering supplies
(such as arrays and
extra batteries)

Get 24/7 personalized support



Call MyNovocure at
[1-855-281-9301](tel:1-855-281-9301)



Email MyNovocure at
support@mynovocure.com

novocure®

©2025 Novocure GmbH. All Rights Reserved. MyNovocure, Novocure, and Optune Lua are registered trademarks of Novocure GmbH. US-OPL-00151 v1.0 March 2025

OPTUNE
LUA®