

For patients with newly diagnosed GBM

OPTUNE GIO® CAN DELIVER THE POWER TO HELP YOU LIVE LONGER*

Learn about Optune Gio

Find answers to your questions about Optune Gio, an approved glioblastoma (GBM) treatment proven to extend survival in patients with newly diagnosed GBM.

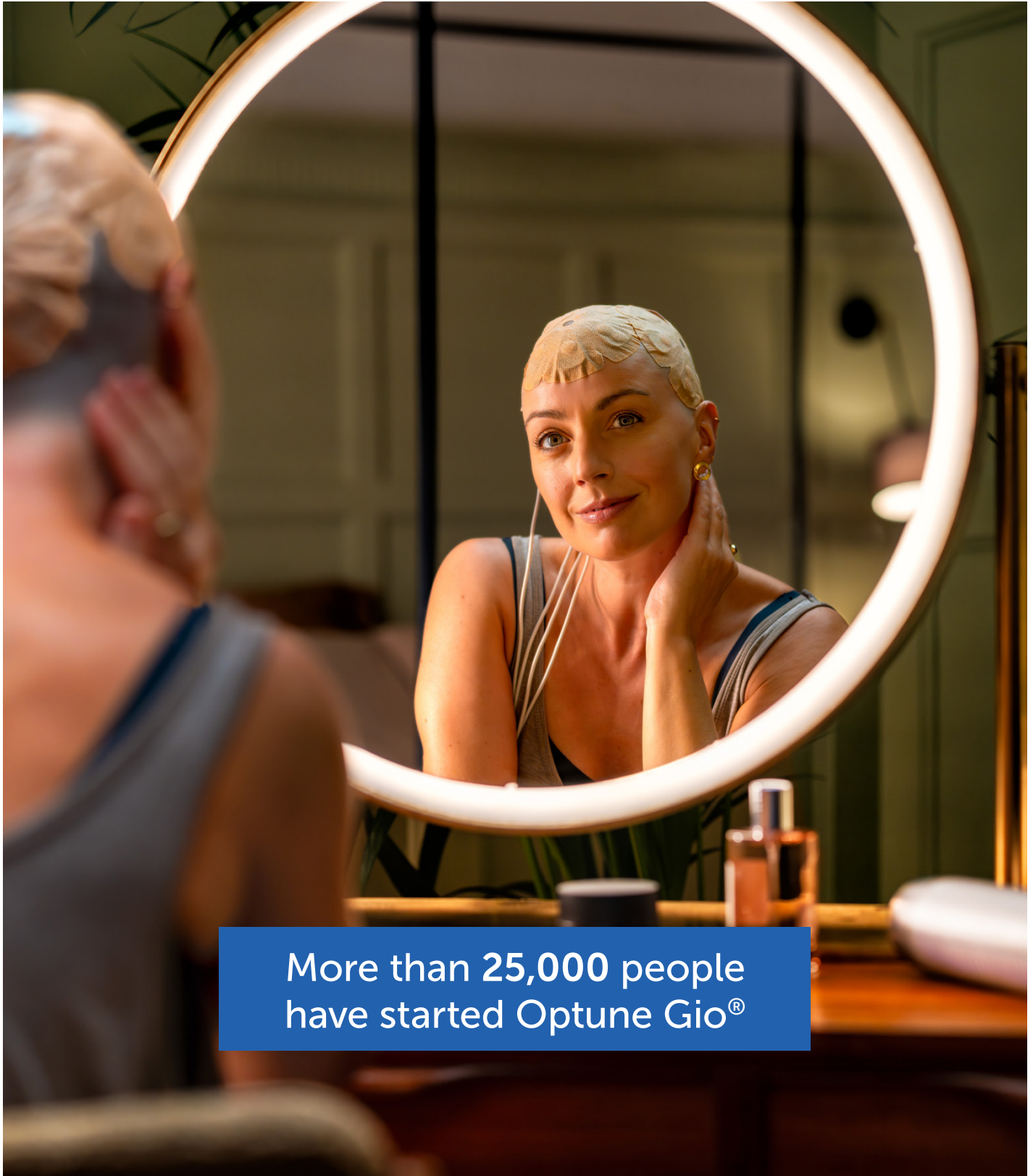
Please see Important Safety Information on page 8.

 **OPTUNE**
GIO®

I POWER MY LIFE

*Results based on a large clinical trial comparing Optune Gio with chemotherapy vs chemotherapy alone.

Actor Portrayal



More than 25,000 people
have started Optune Gio®

Actor Portrayal

Patient images reflect the health status of the patient(s) at the time each photo was taken.

Please see Important Safety Information on [page 8](#).

US-OPG-00049 v4.0 January 2025



What is Optune Gio® and how does it work?

Optune Gio is a wearable, portable device that delivers Tumor Treating Fields (TTFields), which are electric fields that disrupt cancer cell division and may cause cancer cells to die.

Using 4 adhesive patches called transducer arrays, TTFields therapy is delivered right into the area of your body where the cancer is located. TTFields destroy some cancer cells completely and have not been shown to significantly affect healthy cells.

Optune Gio Has NCCN Category 1 Preferred Status

The **National Comprehensive Cancer Network®** (NCCN) is a not-for-profit alliance of leading cancer centers that is committed to advancing cancer care through the creation of NCCN Clinical Practice Guidelines in Oncology (NCCN Guidelines). These NCCN Guidelines are used for patients and healthcare professionals around the world. The NCCN recommends treatments based on 3 Categories, with Category 1 being the highest recommendation.

Tumor Treating Fields (the technology in Optune Gio) have been recognized as a **Category 1 Preferred** treatment for people newly diagnosed with GBM. Optune Gio has established itself as a preferred standard of care because it has shown proven results, is considered a safe therapy, and, when appropriate, is an affordable treatment option.

NCCN makes no warranties of any kind whatsoever regarding their content, use, or application and disclaims any responsibility for their application or use in any way.

Referenced with permission from the NCCN Clinical Practice Guidelines in Oncology (NCCN Guidelines®) for Central Nervous System Cancers V.1.2023. © National Comprehensive Cancer Network, Inc. 2023. All rights reserved. Accessed September 18, 2023. To view the most recent and complete version of the guideline, go online to NCCN.org.

Life with Optune Gio®

How does Optune Gio fit into my treatment plan?

Newly diagnosed GBM

If you have **newly diagnosed GBM**, Optune Gio is used together with chemotherapy* after surgery and radiation with chemotherapy.

*Temozolomide, also known as TMZ or Temodar®.

How long am I going to need to use Optune Gio?

A large clinical study showed that Optune Gio should be worn for at least 75% of the time (18 hours per day) to get the best response from treatment.

- People who used Optune Gio for more hours per day achieved the best survival benefit
- When you start Optune Gio, work with your doctor to make your own individualized plan about how long you should use Optune Gio

After starting Optune Gio, you and your doctor can review your treatment and how it fits into your lifestyle to determine your best path forward.



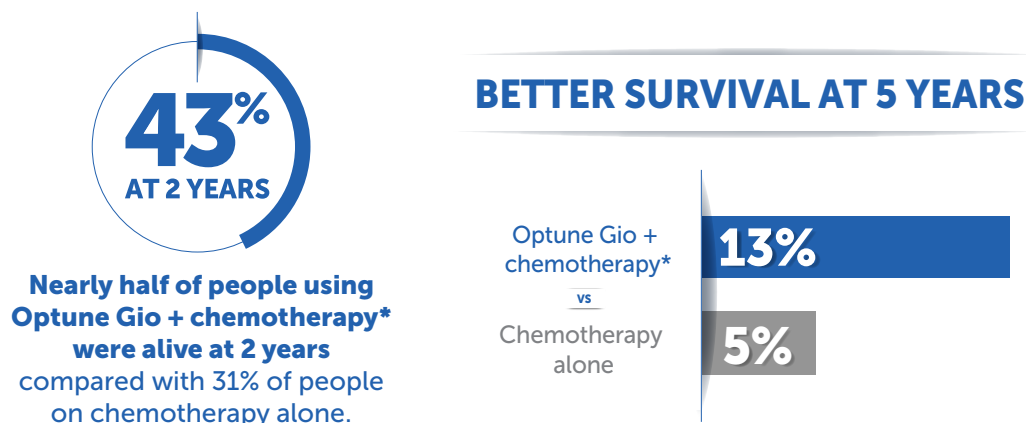
Actor Portrayal

Patient images reflect the health status of the patient(s) at the time each photo was taken.

Optune Gio® for newly diagnosed GBM

Optune Gio + TMZ: Proven power to extend survival

In a large clinical study, people who added Optune Gio to chemotherapy* had a greater opportunity to live longer than those who used chemotherapy alone.



With Optune Gio + chemotherapy*: Tumor growth was delayed an average of 2.7 months longer than in people using chemotherapy alone (6.7 months vs 4 months).

Optune Gio treats where your GBM tumor is located **without increasing chemotherapy-related** side effects.

In a large clinical study, Optune Gio was **safely used together** with chemotherapy for 5 years.

52% of patients experienced mild to moderate skin irritation beneath the transducer arrays, with only 2% of patients experiencing severe skin irritation.

*Temozolomide, also known as TMZ or Temodar®.

Proven to maintain quality of life†

People adding Optune Gio to chemotherapy in the study were able to **maintain their quality of life (mental, emotional, and physical well-being)**.



Before you start therapy with Optune Gio, consider some of the potential benefits and side effects. Some benefits of Optune Gio may vary based on where you are in your diagnosis and treatment plan.

†Quality of life was measured up to 12 months.

Please see Important Safety Information on [page 8](#).

Optune Gio® Buddy Program

If you or a loved one is considering or has recently started Optune Gio, it helps to talk to someone who knows what Optune Gio is like. The Optune Gio Buddy Program connects you with users and/or caregivers who want to share what they've learned with you.*

You can talk to a current user or care partner about:

- How they incorporated Optune Gio into daily life
- Personal experiences with Optune Gio
- Tips for navigating challenges and finding support

Chat with a buddy



Schedule your call today!
1-844-247-1636



Visit OptuneGioBuddy.com
to sign up

*Please note that we cannot provide you with medical advice or talk about personal treatment results because each person is different. Consult with your doctor for medical-related questions.



Actor Portrayal

Patient images reflect the health status of the patient(s) at the time each photo was taken.

MyNovocure®

Support created with you in mind

MyNovocure is here to help you feel more confident about your next steps with resources available throughout treatment. Whether it's answering your questions or helping you reorder supplies, support from MyNovocure is designed with you in mind. Our goal is to provide personalized support from day 1—and every step of the way.



Craig is a patient using Optune Gio®.

Patient images reflect the health status of the patient(s) at the time each photo was taken.

Your MyNovocure Team

With MyNovocure, you have a team of experts ready to support you throughout your treatment journey. Your team is prepared to help with reimbursement assistance, device setup and questions, product education, and troubleshooting. Your support team includes:

- **Reimbursement support:** We can help you understand how your Novocure® therapy may be covered and minimize your cost
- **Treatment support:** We can help answer your treatment questions and provide support along your journey
- **Device support:** We will help you set up your device, schedule future check-ins, and troubleshoot any issues you may have

Please see Important Safety Information on [page 8](#).

US-OPG-00049 v4.0 January 2025



Jeanneane is a patient using Optune Gio®.

Patient images reflect the health status of the patient(s) at the time each photo was taken.

Getting started

Once your healthcare provider prescribes Optune Gio, you will receive a welcome call from a member of the MyNovocure® team to help you get set up with your treatment.

Reimbursement support

Expert advice to guide you through the coverage process

Your MyNovocure team will work to answer your financial questions, minimize your cost, and help you begin treatment with Optune Gio right away.

Your MyNovocure team is there for you

You can count on the MyNovocure team to be there for you when you need them. MyNovocure can help answer your questions from the moment you're prescribed treatment, and 24/7 throughout your treatment journey.

It's important to know that MyNovocure cannot provide medical advice. To make sure you receive proper support, be sure to ask your doctor any treatment questions you may have.

Get 24/7 personalized support.



Call MyNovocure at
1-855-281-9301



Email MyNovocure at
support@mynovocure.com

What is Optune Gio® approved to treat?

Optune Gio is a wearable, portable, FDA-approved device indicated to treat a type of brain cancer called glioblastoma multiforme (GBM) in adult patients 22 years of age or older.

Newly diagnosed GBM

If you have newly diagnosed GBM, Optune Gio is used together with a chemotherapy called temozolomide (TMZ) if:

- Your cancer is confirmed by your healthcare professional **AND**
- You have had surgery to remove as much of the tumor as possible

Recurrent GBM

If your tumor has come back, Optune Gio can be used alone as an alternative to standard medical therapy if:

- You have tried surgery and radiation and they did not work or are no longer working **AND**
- You have tried chemotherapy and your GBM has been confirmed by your healthcare professional

Who should not use Optune Gio?

Optune Gio is not for everyone. Talk to your doctor if you have:

- **An implanted medical device (programmable shunt), skull defect (missing bone with no replacement), or bullet fragment.** Optune Gio has not been tested in people with implanted electronic devices, which may cause the devices not to work properly, and Optune Gio has not been tested in people with skull defects or bullet fragments, which may cause Optune Gio not to work properly
- **A known sensitivity to conductive hydrogels** (the gel on the arrays placed on the scalp like the ones used on EKGs). When Optune Gio comes into contact with the skin, it may cause more redness and itching or may rarely cause a life-threatening allergic reaction

Do not use Optune Gio if you are pregnant or are planning to become pregnant. It is not known if Optune Gio is safe or effective during pregnancy.

What should I know before using Optune Gio?

Optune Gio should only be used after receiving training from qualified personnel, such as your doctor, a nurse, or other medical staff who have completed a training course given by Novocure®, the maker of Optune Gio.

- Do not use any parts that did not come with the Optune Gio Treatment Kit sent to you by Novocure or given to you by your doctor
- Do not get the device or transducer arrays wet
- If you have an underlying serious skin condition on the scalp, discuss with your doctor whether this may prevent or temporarily interfere with Optune Gio treatment

What are the possible side effects of Optune Gio?

Most common side effects of Optune Gio when used together with chemotherapy (temozolomide, or TMZ) were low blood platelet count, nausea, constipation, vomiting, tiredness, scalp irritation from the device, headache, seizure, and depression. The most common side effects when using Optune Gio alone were scalp irritation (redness and itchiness) and headache. Other side effects were malaise, muscle twitching, fall and skin ulcers. Talk to your doctor if you have any of these side effects or questions.

Please visit [OptuneGio.com/Safety](https://www.optunegio.com/safety) for the Optune Gio Instructions For Use (IFU) for complete information regarding the device's indications, contraindications, warnings, and precautions.

Power your Optune Gio® journey with these resources



System overview

- Explore Optune Gio components
- Learn how Optune Gio delivers TTFields that can slow or stop GBM cells from dividing



Patient journey videos

- Learn how others have brought the power of Optune Gio into their daily lives



Connecting with the community

- Meet current Optune Gio patients and/or caregivers at a virtual or local, in-person event
- Connect live over the phone one-on-one with a current Optune Gio patient and/or caregiver

Click [here](#) for more information and resources.



©2025 Novocure GmbH. All rights reserved. MyNovocure, Novocure, and Optune Gio are trademarks of Novocure GmbH. US-OPG-00049 v4.0 January 2025

