



A RAY OF OPPOR TUNE TY

FOR ADULTS WITH LOCALLY ADVANCED PANCREATIC CANCER

Actor portrayals.



Indication and Important Safety Information

What is Optune Pax[®] approved to treat?

Optune Pax is an FDA-approved, wearable therapeutic device, used together with gemcitabine and nab-paclitaxel (a chemotherapy combination). It is indicated for the treatment of adult patients with locally advanced pancreatic cancer.

Who should not use Optune Pax?

Optune Pax for locally advanced pancreatic cancer is not for everyone. Talk to your doctor if you have:

- **An electrical implant.** Use of Optune Pax together with electrical implants has not been tested and may cause the implanted device not to work properly

Please see full Important Safety Information on pages 12-13 and the full [Patient Information and Operation Manual \(PIOM\)](#) for Optune Pax at OptunePax.com.

OPTUNE PAX[®] AT A GLANCE

Inside, you'll find helpful information about:

What is Optune Pax? _____	3
Everyday life with Optune Pax _____	5
How Optune Pax may help _____	7
Most common side effects _____	9
How MyNovocure [®] can help _____	10
Important Safety Information _____	12

WHAT IS OPTUNE PAX®?

Optune Pax is an FDA-approved, wearable therapeutic device used together with cancer drugs known as gemcitabine and nab-paclitaxel for treatment of adults with locally advanced pancreatic cancer (LAPC).



Optune Pax works differently from chemotherapy or radiation— it delivers electric fields, known as Tumor Treating Fields (TTFields), to treat your LAPC.



This is the bag for carrying the device.

This is the Optune Pax device that delivers treatment.



These are the transducer arrays that are worn on your abdomen. They connect to the device to deliver TTFields therapy to your tumor.

Important Safety Information (cont)

Who should not use Optune Pax? (cont)

- **A known sensitivity to gels** like the gel used on electrocardiogram (ECG) stickers or transcutaneous electrical nerve stimulation (TENS) electrodes. In this case, skin contact with the gel used with Optune Pax may commonly cause increased redness and itching. In rare cases, it may lead to severe allergic reactions that can cause a drop in blood pressure and difficulty breathing

Please see full Important Safety Information on pages 12-13 and the full [Patient Information and Operation Manual \(PIOM\)](#) for Optune Pax at OptunePax.com.



Did you know that cells are sensitive to different electrical frequencies?

The frequency of TFields is tuned to the type of cancer you have and is designed to kill those cancer cells without significantly affecting healthy cells.

Actor portrayal.

Important Safety Information (cont)

Do not use Optune Pax if you are pregnant or are planning to become pregnant. If you are a woman who is able to get pregnant, you must use birth control when using the device. It is not known if Optune Pax is safe or effective during pregnancy.

Please see full Important Safety Information on pages 12-13 and the full [Patient Information and Operation Manual \(PIOM\)](#) for Optune Pax at OptunePax.com.

DESIGNED TO WORK IN YOUR EVERYDAY LIFE

After starting Optune Pax®, you and your doctor can review your treatment and how it fits into your lifestyle to determine your best path forward.



Optune Pax is wearable and portable, so you can continue receiving treatment while going about your daily activities.



You should use Optune Pax at least 12 hours a day.



You can choose how and when to wear Optune Pax, as it fits into your lifestyle, to reach your treatment goal.

Important Safety Information (cont)

What should I know before using Optune Pax?

Optune Pax should only be used after receiving training from qualified personnel, such as your doctor, a nurse, or other medical staff who have completed a training course given by Novocure®, the maker of Optune Pax.

- Do not use any parts that did not come with the Optune Pax Treatment Kit sent to you by Novocure or given to you by your doctor

Please see full Important Safety Information on pages 12-13 and the full [Patient Information and Operation Manual \(PIOM\)](#) for Optune Pax at OptunePax.com.

You're not alone

MyNovocure® is here to answer any questions you might have throughout treatment.*

*It's important to know that MyNovocure cannot provide medical advice. To be sure you receive proper support, ask your doctor any treatment questions you may have.

HOW OPTUNE PAX[®] MAY HELP

In a clinical trial, Optune Pax was studied in 571 people with locally advanced pancreatic cancer. Half of those people used Optune Pax together with cancer drugs called gemcitabine and nab-paclitaxel, while the other half only used cancer drugs without Optune Pax.*

The results:

People using Optune Pax lived longer

People using Optune Pax with cancer drugs **lived 2 months longer**, on average, than people using only cancer drugs.*



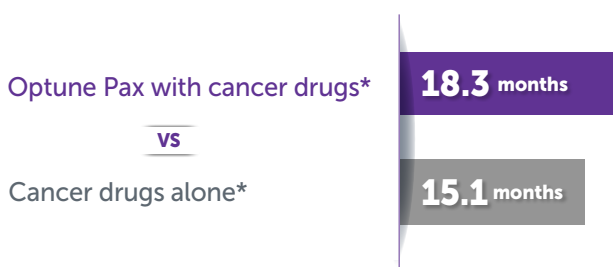
~68% of people were still living at 1 year



when using Optune Pax with cancer drugs compared to 60.2% of people using only cancer drugs.*

In a subset of people (405 out of 571) who stayed on therapy for at least 28 days

People using Optune Pax with cancer drugs **lived 3 months longer**, on average, than people using only cancer drugs.*



~75% of people were still living at 1 year



when using Optune Pax with cancer drugs compared to 65.9% of people using only cancer drugs.*

*Cancer drugs=gemcitabine and nab-paclitaxel.

Important Safety Information (cont)


What should I know before using Optune Pax? (cont)

- Do not get the device or transducer arrays wet
- Please be aware that Optune Pax has a cord that plugs into an electrical socket. Be careful of tripping when it's connected

Please see full Important Safety Information on pages 12-13 and the full [Patient Information and Operation Manual \(PIOM\)](#) for Optune Pax at OptunePax.com.

TIME TO PAIN GETTING WORSE

People treated with Optune Pax and cancer drugs experienced a delay in time in their pain getting worse compared to people treated with cancer drugs alone.*

A photograph of an elderly woman with short grey hair, wearing a blue denim jacket over a white top and pink pants, carrying a black backpack. She is smiling and watering plants in a garden with a green watering can. The background is a lush garden with various plants and trees.

Optune Pax with cancer drugs did not negatively impact patients' quality of life versus cancer drugs alone**

The group treated with Optune Pax and cancer drugs experienced better quality of life from the start of treatment until the cancer began to grow and spread, in terms of onset of health deterioration, pain, and pancreatic pain.

Actor portrayal.

*Cancer drugs=gemcitabine and nab-paclitaxel.

†Based on the European Organisation for Research and Treatment of Cancer (EORTC) core quality of life questionnaire. Data were collected for 26 months.

Important Safety Information (cont)

What should I know before using Optune Pax? (cont)

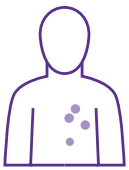
- If you have an underlying skin condition where the transducer arrays are placed, discuss with your doctor whether this may prevent or temporarily interfere with Optune Pax treatment

Please see full Important Safety Information on pages 12-13 and the full [Patient Information and Operation Manual \(PIOM\)](#) for Optune Pax at OptunePax.com.

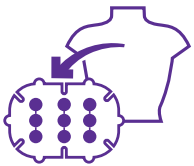
SKIN IRRITATION IS THE MOST COMMON DEVICE-RELATED SIDE EFFECT

Skin irritation may look like a red rash, small sores, or blisters on your chest or back. Identifying it early and contacting your doctor will help ensure you don't miss any time on treatment. **Be sure to ask for your care partner's help for any hard-to-see places.**

In the clinical study



76.3% of people experienced skin irritation, which was mostly mild to moderate.



8.4% of patients had to stop using Optune Pax[®] because of side effects related to using the device.

In the study, the most common side effect caused by Optune Pax was skin irritation. **Other side effects were attributed to cancer drugs or the cancer itself.*** Optune Pax didn't worsen chemotherapy-related side effects.

*Cancer drugs=gemcitabine and nab-paclitaxel.

Important Safety Information (cont)

What are the possible side effects of Optune Pax?

The most common side effects of Optune Pax used together with chemotherapy drugs were low neutrophils, low red blood cell count, low platelet count, low white blood cell count, diarrhea, nausea, vomiting, abdominal pain, constipation, fatigue, swelling, fever, pain, COVID-19, infection, respiratory tract infection, urinary tract infection, pneumonia, liver enzyme increased, weight loss, low potassium level, low albumin level, high blood sugar, muscle pain, neuropathy peripheral (damage to the nerves outside the brain and spinal cord), taste disorder, dizziness, difficulty sleeping, shortness of breath, hair loss, skin-related disorders, and low blood pressure.

Please see full Important Safety Information on pages 12-13 and the full [Patient Information and Operation Manual \(PIOM\)](#) for Optune Pax at [OptunePax.com](https://www.OptunePax.com).

MyNovocure[®]

YOUR FULL-SERVICE SUPPORT PARTNER TO HELP YOU GET THE MOST FROM OPTUNE[®] TREATMENT

1

Getting started

MyNovocure gives you the information you need to start your treatment with confidence.

- Reimbursement support
- Device logistics
- Personalized 1-on-1 training

2

Continuous support for continuous care

We offer live, virtual, and on-demand support to help you manage your treatment.

- Ongoing Device Support Specialist (DSS) support
- 24/7 Care Center
- MyNovocure app

3

Daily life

We provide tips and resources to help you keep up with your daily routine using Optune treatment.

- Integrating Optune treatment
- Proactive skin care
- Treatment adjustments

Translation services for training and the 24/7 Care Center are available in more than 200 languages, including Spanish.

MyNovocure is ready to help you any time you need us, 24/7

Our Care Center is available 24/7 via phone to answer your questions and provide technical support.



Call: 1-855-281-9301



Email: support@mynovocure.com

Care Coordinator

MyNovocure cannot provide medical advice.
Your medical questions will be referred back to your doctor.

INDICATION AND IMPORTANT SAFETY INFORMATION (ISI)

What is Optune Pax® approved to treat?

Optune Pax is an FDA-approved, wearable therapeutic device, used together with gemcitabine and nab-paclitaxel (a chemotherapy combination). It is indicated for the treatment of adult patients with locally advanced pancreatic cancer.

Who should not use Optune Pax?

Optune Pax for locally advanced pancreatic cancer is not for everyone. Talk to your doctor if you have:

- **An electrical implant.** Use of Optune Pax together with electrical implants has not been tested and may cause the implanted device not to work properly
- **A known sensitivity to gels** like the gel used on electrocardiogram (ECG) stickers or transcutaneous electrical nerve stimulation (TENS) electrodes. In this case, skin contact with the gel used with Optune Pax may commonly cause increased redness and itching. In rare cases, it may lead to severe allergic reactions that can cause a drop in blood pressure and difficulty breathing

Do not use Optune Pax if you are pregnant or are planning to become pregnant. If you are a woman who is able to get pregnant, you must use birth control when using the device. It is not known if Optune Pax is safe or effective during pregnancy.

What should I know before using Optune Pax?

Optune Pax should only be used after receiving training from qualified personnel, such as your doctor, a nurse, or other medical staff who have completed a training course given by Novocure®, the maker of Optune Pax.

- Do not use any parts that did not come with the Optune Pax Treatment Kit sent to you by Novocure or given to you by your doctor
- Do not get the device or transducer arrays wet
- Please be aware that Optune Pax has a cord that plugs into an electrical socket. Be careful of tripping when it's connected
- If you have an underlying skin condition where the transducer arrays are placed, discuss with your doctor whether this may prevent or temporarily interfere with Optune Pax treatment

What are the possible side effects of Optune Pax?

The most common side effects of Optune Pax used together with chemotherapy drugs were low neutrophils, low red blood cell count, low platelet count, low white blood cell count, diarrhea, nausea, vomiting, abdominal pain, constipation, fatigue, swelling, fever, pain, COVID-19, infection, respiratory tract infection, urinary tract infection, pneumonia, liver enzyme increased, weight loss, low potassium level, low albumin level, high blood sugar, muscle pain, neuropathy peripheral (damage to the nerves outside the brain and spinal cord), taste disorder, dizziness, difficulty sleeping, shortness of breath, hair loss, skin-related disorders, and low blood pressure.

Device-related skin adverse effects associated with the use of Optune Pax include skin inflammation, rash, itching, flat or raised spots, skin redness, skin irritation, skin reaction, and open sores. Other device-related adverse effects associated with the use of Optune Pax include overheating of the array, leading to pain and/or local skin burns, allergic reaction to the adhesive or gel from the transducer arrays, and local warmth and tingling sensation beneath the arrays. Talk to your doctor if you have any of these side effects or have any questions.

Please see the full [Patient Information and Operation Manual \(PIOM\)](#) for Optune Pax at [OptunePax.com](https://www.optunepax.com).

A RAY OF OPPORTUNITY

FOR ADULTS WITH LOCALLY ADVANCED PANCREATIC CANCER

Scan or click the QR
code to learn more



MyNovocure®

Your full-service support
partner to help you get the
most from Optune® treatment

24/7 support



Call: 1-855-281-9301



Email: support@mynovocure.com

novocure®

©2026 Novocure GmbH. All Rights Reserved. Optune, Optune Pax,
MyNovocure, and Novocure are registered trademarks of Novocure GmbH.
US-OPP-00128 v1.0 April 2026

OPTUNE
PAX®