

FOR ADULTS WITH METASTATIC NON-SMALL CELL LUNG CANCER\*

# OPTUNE LUA® CAN DELIVER THE POWER TO HELP YOU LIVE LONGER

\*who have progressed on or after platinum-based chemotherapy and when used together with PD-1/PD-L1 inhibitors or docetaxel

 **OPTUNE**  
LUA®

**I POWER MY LIFE**

## Indication and Selected Important Safety Information

### What is Optune Lua approved to treat?

Optune Lua is a wearable, portable, FDA-approved device used together with PD-1/PD-L1 inhibitors (immunotherapy) or docetaxel. It is indicated for adult patients with metastatic non-small cell lung cancer (mNSCLC) who have progressed on or after a platinum-based regimen.

### Who should not use Optune Lua?

Optune Lua for mNSCLC is not for everyone. Talk to your doctor if you have:

- An electrical implant. Use of Optune Lua together with electrical implants has not been tested and may cause the implanted device not to work properly

Please see full Important Safety Information on [pages 13 and 14](#) and the Optune Lua Patient Information and Operation Manual (PIOM) at [OptuneLua.com](http://OptuneLua.com).

Actor Portrayal



## Optune Lua<sup>®</sup> at a glance

Inside, you'll find helpful information about:

<u>What is Optune Lua?</u>	3
<u>How Optune Lua works</u>	5
<u>How Optune Lua may help</u>	6
<u>How everyday life is with Optune Lua</u>	8
<u>How to manage the most common side effect</u>	9
<u>How MyNovocure<sup>®</sup> can help</u>	10
<u>How to be an Optune Lua care partner</u>	11

Please see full Important Safety Information on [pages 13 and 14](#) and the Optune Lua Patient Information and Operation Manual (PIOM) at [OptuneLua.com](https://www.OptuneLua.com).



## What is Optune Lua<sup>®</sup>?

Optune Lua is not a pill, infusion, or injection. It's an FDA-approved medical device that uses innovative technology to **kill metastatic non-small cell lung cancer (mNSCLC) cells**.

### A portable, wearable device

This is the Optune Lua device that powers treatment

This is the bag for carrying the device

These are the transducer arrays that are worn on the chest and connect to the device to deliver Tumor Treating Fields (TTFields) therapy to your chest

### Selected Important Safety Information

#### Who should not use Optune Lua? (continued)

- A known sensitivity to gels like the gel used on electrocardiogram (ECG) stickers or transcutaneous electrical nerve stimulation (TENS) electrodes. In this case, skin contact with the gel used with Optune Lua may commonly cause increased redness and itching, and rarely may even lead to severe allergies such as a fall in blood pressure and difficulty breathing

Do not use Optune Lua if you are pregnant or are planning to become pregnant. It is not known if Optune Lua is safe or effective during pregnancy.

Please see full Important Safety Information on [pages 13 and 14](#) and the Optune Lua Patient Information and Operation Manual (PIOM) at [OptuneLua.com](http://OptuneLua.com).

## Use Optune Lua<sup>®</sup> as part of your treatment plan

Optune Lua is for adults who have progressed on or after a platinum-based regimen. It is used together with a class of immunotherapy known as PD-1/PD-L1 inhibitors or a type of chemotherapy called docetaxel.



### Selected Important Safety Information

#### What should I know before using Optune Lua?

Optune Lua should only be used after receiving training from qualified personnel, such as your doctor, a nurse, or other medical staff who have completed a training course given by Novocure<sup>®</sup>, the maker of Optune Lua.

- Do not use any parts that did not come with Optune Lua Treatment Kit sent to you by Novocure or given to you by your doctor
- Do not get the device or transducer arrays wet

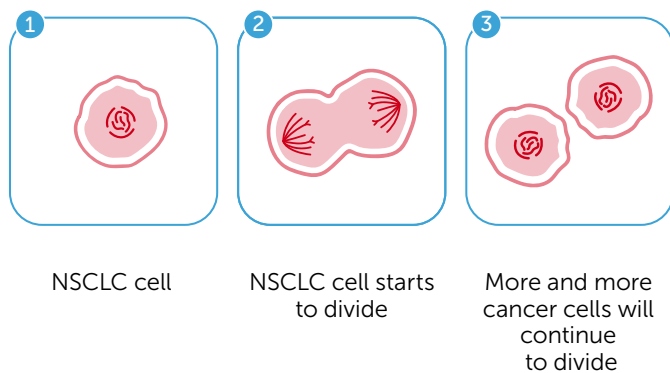
Please see full Important Safety Information on [pages 13 and 14](#) and the Optune Lua Patient Information and Operation Manual (PIOM) at [OptuneLua.com](https://www.OptuneLua.com).

## How Optune Lua<sup>®</sup> works

Did you know that cells are sensitive to different frequencies?

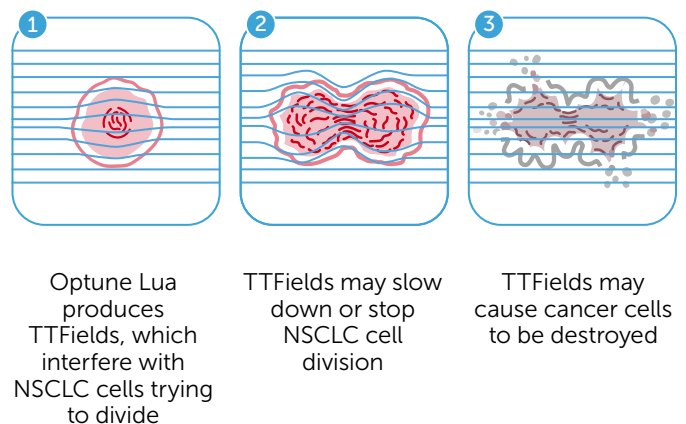
### How cells divide

In metastatic non-small cell lung cancer (mNSCLC), **tumors continue to grow or spread because cancer cells grow rapidly and divide into new cells.**



### Using Optune Lua

Optune Lua uses a technology called **Tumor Treating Fields (TTFields)**, which directs electricity into mNSCLC tumors. **This can help stop cancer cells from dividing and may even destroy them without affecting healthy cells.** Based on pre-clinical data, it was shown that your immune system may become activated to further fight the disease.



**Optune Lua was shown to slow down the progression of NSCLC.**

### Selected Important Safety Information

#### What should I know before using Optune Lua? (continued)

- Please be aware that Optune Lua has a cord that plugs into an electrical socket. Be careful of tripping when it's connected
- If you have an underlying serious skin condition where the transducer arrays are placed, discuss with your doctor whether this may prevent or temporarily interfere with Optune Lua treatment

Please see full Important Safety Information on [pages 13 and 14](#) and the Optune Lua Patient Information and Operation Manual (PIOM) at [OptuneLua.com](http://OptuneLua.com).

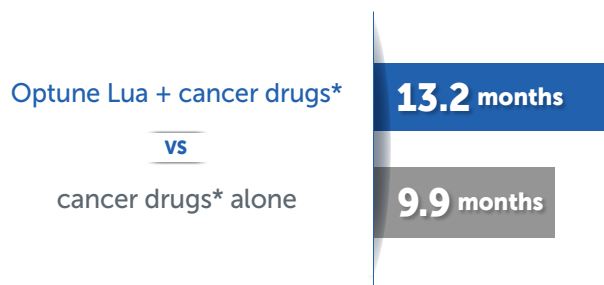


## How Optune Lua<sup>®</sup> may help

In a clinical trial, Optune Lua was studied in 291 people with metastatic NSCLC. Half used Optune Lua together with a class of immunotherapy known as PD-1/PD-L1 inhibitors or a type of chemotherapy called docetaxel, while the other half did not use Optune Lua.

The results:

### People lived longer



People using Optune Lua with cancer drugs\* **lived for over 13 months** compared to nearly 10 months for people using cancer drugs\* alone.

**About half of people using Optune Lua with cancer drugs\* were still living at 1 year** compared to 42% of people using cancer drugs\* alone.



\*Cancer drugs=PD-1/PD-L1 inhibitors or docetaxel.

### Selected Important Safety Information

#### What are the possible side effects of Optune Lua?

The most common side effects of Optune Lua when used together with certain immunotherapy and chemotherapy drugs were dermatitis, pain in the muscles, bones, or joints, fatigue, anemia, alopecia (hair loss),...

Please see full Important Safety Information on [pages 13 and 14](#) and the Optune Lua Patient Information and Operation Manual (PIOM) at [OptuneLua.com](http://OptuneLua.com).

## In a clinical study, using Optune Lua<sup>®</sup> with specific cancer drugs\* helped people live longer

**Using Optune Lua with PD-1/PD-L1 inhibitors helped people live about 8 months longer** than those who used PD-1/PD-L1 inhibitors alone.

61% of people using Optune Lua with PD-1/PD-L1 inhibitors were still living at 1 year compared with 46% of people using PD-1/PD-L1 inhibitors alone. **This difference was statistically significant.**

**Using Optune Lua with docetaxel helped people live about 2 months longer** than those using docetaxel alone.

46% of people using Optune Lua with docetaxel were still living at 1 year compared with 39% of people using docetaxel alone. **This difference was not statistically significant.**

## Proven to maintain quality of life



**Mental health**



**Emotional health**



**Physical well-being**

People maintained their quality of life, including mental, emotional, and physical health, **over 12 months while using Optune Lua with cancer drugs\* or cancer drugs\* alone.**<sup>†</sup>

<sup>†</sup>Based on the European Organisation for Research and Treatment of Cancer (EORTC) core quality of life questionnaire. Data was collected for 54 weeks.

### Selected Important Safety Information

#### What are the possible side effects of Optune Lua? (continued)

...dyspnea, nausea, cough, diarrhea, anorexia, pruritus (itching), leukopenia, pneumonia, respiratory tract infection, localized edema (swelling), rash, pain,...

Please see full Important Safety Information on [pages 13 and 14](#) and the Optune Lua Patient Information and Operation Manual (PIOM) at [OptuneLua.com](http://OptuneLua.com).

## Designed to work in your everyday life

Once you start using Optune Lua<sup>®</sup>, it can be incorporated into your lifestyle. You and your doctor can build a routine that works best for you.

### Portable and lightweight



Optune Lua is only 2.7 pounds, or the weight of an average laptop.



It can be taken with you as you go about your day.

### Living with Optune Lua



You should use Optune Lua for at least 12 hours per day on average for the best response. Try to use Optune Lua as many hours per day as possible, since the more time you use it, the more effective treatment can be. You can take short breaks, if needed.



### Sleeping with Optune Lua

Wearing the arrays while you sleep is one of the best ways to ensure you achieve at least 12 hours per day.

### Selected Important Safety Information

#### What are the possible side effects of Optune Lua? (continued)

...constipation, skin ulcers, hypokalemia (low potassium levels), hypoalbuminemia (low albumin levels), hyponatremia (low sodium levels), and dysphagia (difficulty swallowing).

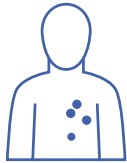
Please see full Important Safety Information on [pages 13 and 14](#) and the Optune Lua Patient Information and Operation Manual (PIOM) at [OptuneLua.com](http://OptuneLua.com).



## The most common device-related side effect

Skin irritation may look like a red rash, small sores, or blisters on your chest or back. Identifying it early and contacting your doctor will help ensure you don't miss any time on treatment. **Be sure to ask for your care partner's help for any hard-to-see places.**

### In the clinical study



63% of people experienced mild to moderate skin irritation. None of these cases of skin irritation caused damage to the skin that could not be healed.



About 4% of people had a severe skin issue that required a break from Optune Lua<sup>®</sup> treatment. Most people were able to treat their skin irritation with a prescription medication applied to the skin provided by their doctor.



In all cases, the skin issue resolved after stopping or taking a break from treatment.

In the study, the only common side effect caused by Optune Lua was skin irritation. **Any other side effects were due to the cancer itself or the cancer drugs\* used with the device.** Optune Lua directly targets the cancer cells and doesn't increase chemotherapy- or immunotherapy-related side effects.

\*Cancer drugs=PD-1/PD-L1 inhibitors or docetaxel.

### Selected Important Safety Information

#### What are the possible side effects of Optune Lua? (continued)

Other potential adverse effects associated with the use of Optune Lua include treatment related skin irritation, allergic reaction to the adhesive or to the gel,...

Please see full Important Safety Information on [pages 13 and 14](#) and the Optune Lua Patient Information and Operation Manual (PIOM) at [OptuneLua.com](http://OptuneLua.com).

# MyNovocure®

## Support created with you in mind

MyNovocure is a support program for Optune Lua®. It's here for you all day, every day so you feel more confident throughout treatment. MyNovocure can help with:



Insurance support



Treatment information, including how it works and possible side effects



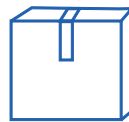
Step-by-step Optune Lua training



Troubleshooting any technical issues



Tips for integrating Optune Lua into your daily life



Reordering supplies, such as arrays and extra batteries



Resources for traveling with Optune Lua

### Have questions or need support?



Call MyNovocure at [1-855-281-9301](tel:1-855-281-9301)



Email MyNovocure at [support@mynovocure.com](mailto:support@mynovocure.com)

Please see full Important Safety Information on [pages 13 and 14](#) and the Optune Lua Patient Information and Operation Manual (PIOM) at [OptuneLua.com](http://OptuneLua.com).

## Support for care partners

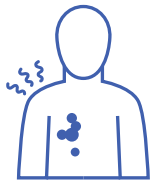
Since Optune Lua® is a medical device instead of a drug cancer treatment, your role as a care partner may be a bit different from other care partners.

### Quick care partner tips

Because some of the arrays go on your loved one's back:



You may need to help them apply and change the arrays throughout treatment



Be sure to watch out for signs of skin irritation—like redness, blisters, or sores—in hard-to-see places. If you notice anything, contact their doctor

### How to be an Optune Lua care partner

[Click here](#) to learn more helpful information about your unique role as an Optune Lua care partner.

### Selected Important Safety Information

#### What are the possible side effects of Optune Lua? (continued)

...overheating of the array leading to pain and/or local skin burns, infections at site where the arrays make contact with the skin, local warmth and tingling sensation beneath the arrays, medical device site reaction, muscle twitching, and skin breakdown/skin ulcer. Talk to your doctor if you have any of these side effects or questions.

Please see full Important Safety Information on [pages 13 and 14](#) and the Optune Lua Patient Information and Operation Manual (PIOM) at [OptuneLua.com](http://OptuneLua.com).



## Support for care partners (continued)

It's okay if you experience some anxiety as a care partner when it comes to array placement, skin irritation, and operating the device. Remember, caring for yourself is equally important.



### You're not alone

MyNovocure® is here to answer any questions you might have throughout treatment.\*

\*It's important to know that MyNovocure cannot provide medical advice. To make sure you receive proper support, be sure to ask your doctor any treatment questions you may have.

Please see full Important Safety Information on [pages 13 and 14](#) and the Optune Lua Patient Information and Operation Manual (PIOM) at [OptuneLua.com](https://www.OptuneLua.com).

## Important Safety Information

### What is Optune Lua<sup>®</sup> approved to treat?

Optune Lua is a wearable, portable, FDA-approved device used together with PD-1/PD-L1 inhibitors (immunotherapy) or docetaxel. It is indicated for adult patients with metastatic non-small cell lung cancer (mNSCLC) who have progressed on or after a platinum-based regimen.

### Who should not use Optune Lua?

Optune Lua for mNSCLC is not for everyone. Talk to your doctor if you have:

- **An electrical implant.** Use of Optune Lua together with electrical implants has not been tested and may cause the implanted device not to work properly
- **A known sensitivity to gels** like the gel used on electrocardiogram (ECG) stickers or transcutaneous electrical nerve stimulation (TENS) electrodes. In this case, skin contact with the gel used with Optune Lua may commonly cause increased redness and itching, and rarely may even lead to severe allergies such as a fall in blood pressure and difficulty breathing

**Do not use Optune Lua if you are pregnant or are planning to become pregnant.** It is not known if Optune Lua is safe or effective during pregnancy.

### What should I know before using Optune Lua?

Optune Lua should only be used after receiving training from qualified personnel, such as your doctor, a nurse, or other medical staff who have completed a training course given by Novocure<sup>®</sup>, the maker of Optune Lua.

- Do not use any parts that did not come with Optune Lua Treatment Kit sent to you by Novocure or given to you by your doctor
- Do not get the device or transducer arrays wet
- Please be aware that Optune Lua has a cord that plugs into an electrical socket. Be careful of tripping when it's connected
- If you have an underlying serious skin condition where the transducer arrays are placed, discuss with your doctor whether this may prevent or temporarily interfere with Optune Lua treatment

## What are the possible side effects of Optune Lua®?

The most common side effects of Optune Lua when used together with certain immunotherapy and chemotherapy drugs were dermatitis, pain in the muscles, bones, or joints, fatigue, anemia, alopecia (hair loss), dyspnea, nausea, cough, diarrhea, anorexia, pruritus (itching), leukopenia, pneumonia, respiratory tract infection, localized edema (swelling), rash, pain, constipation, skin ulcers, hypokalemia (low potassium levels), hypoalbuminemia (low albumin levels), hyponatremia (low sodium levels), and dysphagia (difficulty swallowing).

Other potential adverse effects associated with the use of Optune Lua include treatment related skin irritation, allergic reaction to the adhesive or to the gel, overheating of the array leading to pain and/or local skin burns, infections at site where the arrays make contact with the skin, local warmth and tingling sensation beneath the arrays, medical device site reaction, muscle twitching, and skin breakdown/skin ulcer. Talk to your doctor if you have any of these side effects or questions.

Please see [Patient Information and Operation Manual \(PIOM\)](#) for Optune Lua at [OptuneLua.com](http://OptuneLua.com).



# Ask your doctor about the power of Optune Lua®

## Subscribe for updates

[Click here](#) for email updates from Novocure®  
to stay up to date on Optune Lua

## Check out FAQs

[Click here](#) to get answers to some of the most  
frequently asked questions

## MyNovocure®

Call us toll free, any time of the day, at [1-855-281-9301](tel:1-855-281-9301)  
or email us at [support@mynovocure.com](mailto:support@mynovocure.com)

**novocure®**

©2024 Novocure GmbH. All Rights Reserved.  
MyNovocure, Novocure, and Optune Lua are registered  
trademarks of Novocure GmbH. US-OPL-00304 v1.0  
November 2024

 **OPTUNE**  
LUA®